



BinaryTree

# Upgrade with Ease.

Migrate to Exchange 2010 from Exchange 2003 or 2007 with Binary Tree E2E Complete

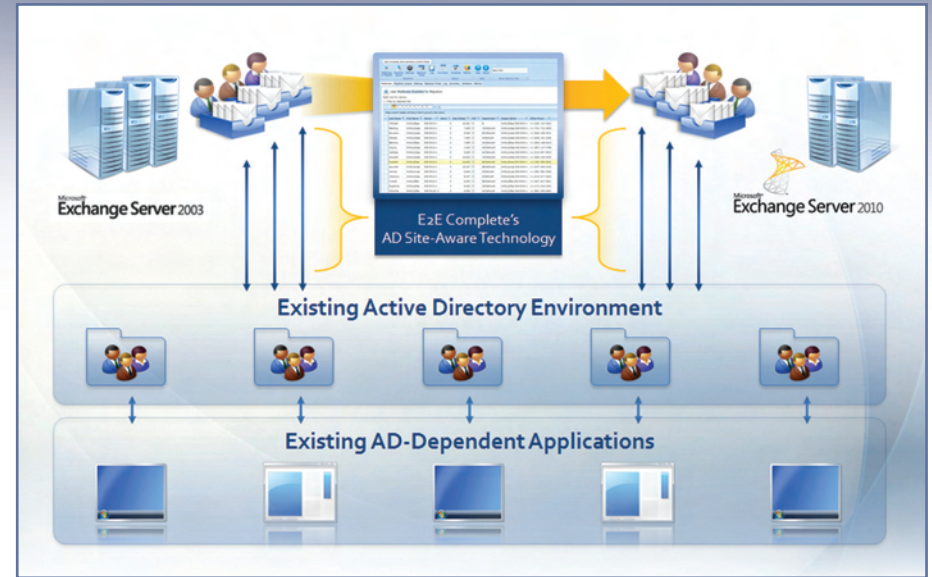
Since 1993, Binary Tree and its partners have worked with thousands of companies to migrate data for tens of millions of users from old systems to new ones—physical and virtual. As your organization prepares to upgrade from Exchange 2003 or Exchange 2007 to Exchange 2010, Binary Tree E2E Complete can help reduce the stress and costs associated with the migration.

E2E Complete enables administrators to perform intra-organizational Exchange upgrades with minimal changes to the Active Directory environment, all with centralized control over the entire process. End users benefit too: timely notifications and opportunities to reschedule their individual migrations keep them informed and productive throughout the upgrade.

With advanced technologies, such as Microsoft SilverLight for the Administrative Dashboard, E2E Complete ensures the highest levels of reliability and reporting. It introduces efficiency and predictability to the transition process so that your organization can reduce its overall resource requirements and costs.

## Streamlined Migration

E2E Complete provides an industry-leading workflow engine to manage migration scenarios. Through advanced analytics that provide near real-time updates and project completion forecasts, E2E Complete offers unrivaled reporting capabilities. Our unique "Do Not Migrate Before" value and observation of traditional blackout windows helps ensure that users remain undisturbed during their offline mailbox transfer from Exchange 2003 to Exchange 2010. For environments migrating from Exchange 2007, we offer the same advanced scheduling technology, allowing you to complete your migration project, without flooding your network, impacting email performance and line of business applications.

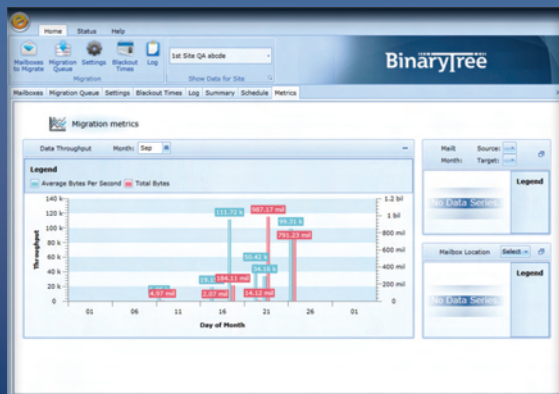


## Maximize Migration Throughput

BinaryTree E2E Complete works with your current Active Directory topology to maximize migration throughput. With our AD site-aware technology, administrators can easily move mailboxes and leverage the parallelism and redundancy of your environment. E2E Complete will shuttle data during every available moment, outside of the blackout windows that you define, which ends the guessing game of how many mailboxes can be migrated during a given window. E2E Complete brings forecasting and predictability to an otherwise difficult task and it embraces the new asynchronous nature of Exchange 2010 mailbox migrations.

## Generate Accurate Forecasts and Reports

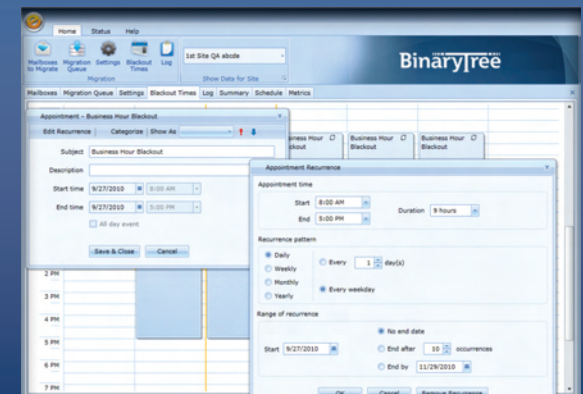
Inaccurate or incomplete information about the migration can increase user downtime and lead to more calls placed to the helpdesk. The forecasting and reporting capabilities built into E2E Complete help provide highly accurate information to users, IT, and company leadership about the status of the migration. This insight helps everyone plan work more confidently because they have knowledge of, and control over, how and when the migration affects them. E2E Complete also forecasts migration times for pending user data, which helps IT more accurately predict and communicate the migration schedule to the entire organization.



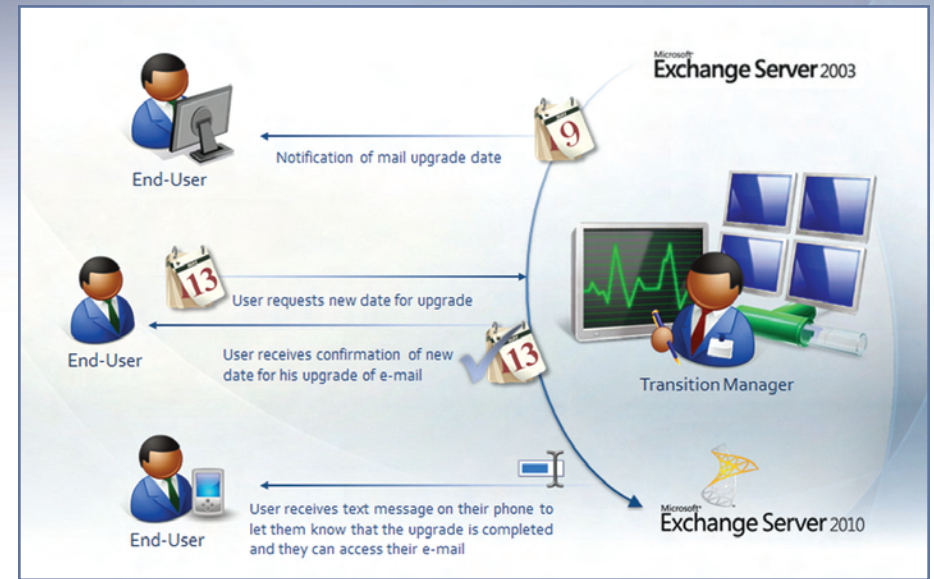
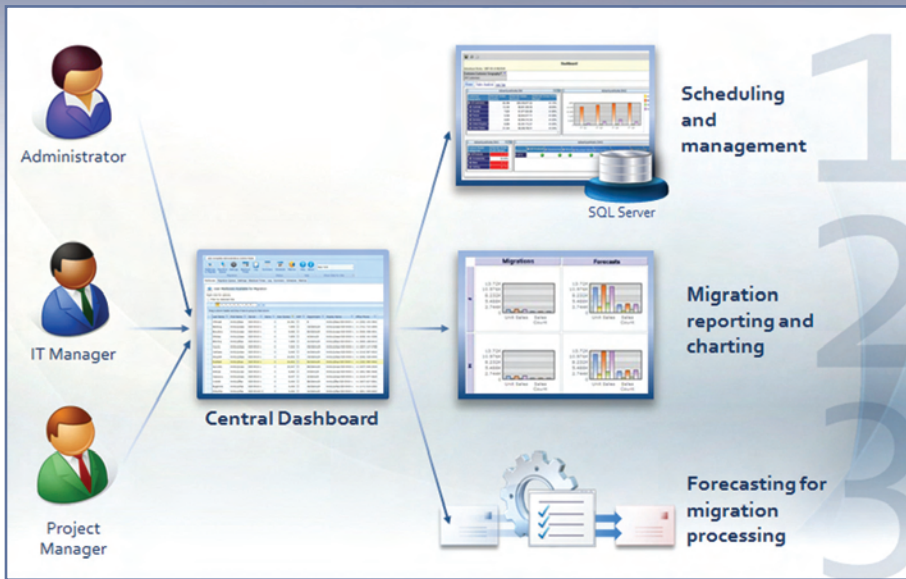
Track Migration Throughput Against the Timeline

Last Name	First Name	Site	Server	Status	Size	Department
Albany	David	Default-Third-Site-Name	E2E-EX104-3	7	44877	CD6mch2
Elyria	David	Default-Third-Site-Name	E2E-EX104-3	7	178342	CD6mch2
Curban	David	Default-Third-Site-Name	E2E-EX104-3	7	43272	CD6mch2
Adrian	David	Default-Third-Site-Name	E2E-EX104-3	7	139880	CD6mch2
Drouha	David	Default-Third-Site-Name	E2E-EX104-3	7	2094754	CD6mch2
Adrian	David	Default-Third-Site-Name	E2E-EX104-3	7	54702	CD6mch2
Scott	David	Default-Third-Site-Name	E2E-EX104-3	7	1149782	CD6mch2
Scott	David	Default-Third-Site-Name	E2E-EX104-3	7	47384	CD6mch2
Scott	David	Default-Third-Site-Name	E2E-EX104-3	7	139440	CD6mch2
Scott	David	Default-Third-Site-Name	E2E-EX104-3	7	63844	CD6mch2
Scott	David	Default-Third-Site-Name	E2E-EX104-3	7	4337135	CD6mch2

Prioritize Moves As You Filter Objects



Set Blackout Windows to Avoid Peak Usage Times



## Centralized Management

The need to migrate data for hundreds or thousands of users in locations all over the country or the world creates management and coordination headaches for the IT administrators in charge of the effort. E2E Complete enables IT administrators to streamline their management of the migration queue. Instead of spending hours updating various spreadsheets, they can refer to a centralized scheduling and management console to more efficiently prioritize users as needed. E2E Complete also helps administrators minimize the amount of changes to the Active Directory environment so they can move user identities from one system to another and avoid managing multiple identities for every employee.

## More Effective Project Management

Unlike manually scripted processes, E2E Complete gives administrators full control of the migration queue. Start, stop, pause, or reshuffle—prioritize users as needed. Our site-aware view allows administrators to monitor a project in an easily digestible format. As the project progresses, E2E Complete leverages the performance metrics of completed migrations and applies forecasts to mailboxes in the migration queue. E2E Complete delivers an unmatched level of transparency that shows everything from the estimated migration time of specific mailboxes to a projected completion date for all the mailboxes in the queue.

## Refined End-User Experience

Chaos and unproductive downtime can develop if end users lack insight and input into when their data is scheduled for migration. E2E Complete notifies users of their migration date in advance—via email or SMS—and users have the opportunity to request a new date if the scheduled date falls at a particularly inconvenient time. After the user's data migration finishes, E2E Complete sends an SMS to their phone to notify them that they again have access to email.

## Migrate and Maintain Productivity

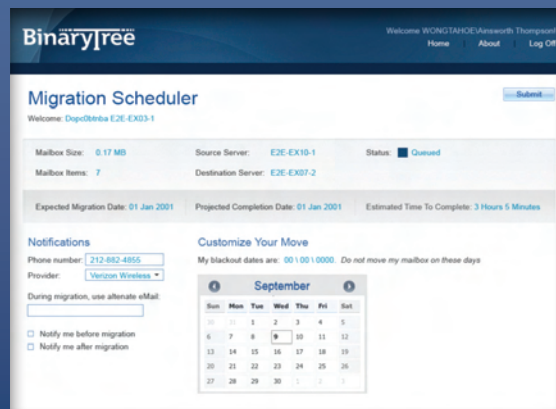
E2E Complete minimizes the migration's impact on end users and helps maximize their productivity during the process. Administrators can schedule migrations for "off hours" with a range of notification options—delivered to external emails and cell phones—to help keep users informed throughout the migration process. If a user's migration is scheduled for a "bad day," users can simply log onto a web portal and indicate on which days the migration should not take place. Administrators can also automatically defer migrations of users who have enabled their out-of-office flag. This capability helps ensure that a migration won't adversely impact an executive sitting in an important meeting on the other side of the world.

# E2E Complete Provides Your Team with the Tools to Succeed



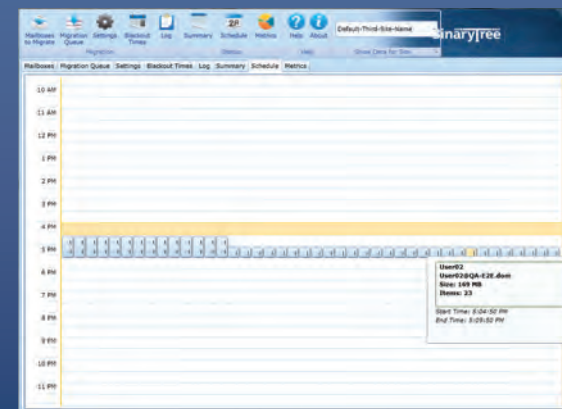
## Director of Messaging Services

“Enable accurate reporting and automated communications to end-users.”



## Training and Enablement Director

“Provide automated communications to end-users and integrate with corporate training and IT software deployment teams.”



## IT Project Manager

“Streamlined processing for the fastest transition possible in order to remove the old Exchange 2003 infrastructure.”

## Summary of Key Features

### Streamlined Migration

- Workflow engine brings clarity and transparency to an otherwise chaotic process
- Almost 100 mailbox and directory attributes are consolidated, giving you the information you need to migrate users
- Unique “Do Not Migrate Before,” value grants fine control over when mailboxes will move
- Maximize migration speed by efficiently distributing mailbox moves across Exchange Client Access Servers
- Search and filter through tens of thousands of users with lightning speed as you prioritize mailboxes

### Centralized Management

- Migration metrics show your project status every step of the way
- As you collect metrics on completed mailbox moves, get estimates on how long remaining mailboxes will take
- Watch as mailbox sequence and timeline estimates are charted along a calendar grid. Tell the CIO when the project will be done!
- Blackout windows allow mail to move only when you want it to
- Individual mailboxes are licensed forever. Once you’ve moved mailboxes with E2E Complete, you’ll never want to do it any other way

### Refined End-User Experience

- View “Out of Office” settings while managing the migration queue, or temporarily skip “OOF” users, altogether
- Keep users informed with automatic emails showing their estimated time/date for migration. Bad day? Let your users opt-out, temporarily
- Get notified via text message when the migration is done, allowing employees to get back to work faster



For more information on BinaryTree E2E Complete, visit [www.binarytree.com/eze](http://www.binarytree.com/eze).

U.S. and Worldwide: +1 (212) 244-3635 | U.K.: +44 (0) 20 7692 5661 | Germany: +49 69 66 55 43 79 | [sales@binarytree.com](mailto:sales@binarytree.com) | [www.binarytree.com](http://www.binarytree.com)

© 2010 Binary Tree, Inc. All rights reserved. Binary Tree, the Binary Tree logo, and E2E Complete are trademarks of Binary Tree, Inc. All other trademarks or registered trademarks are the property of their respective rights holders.